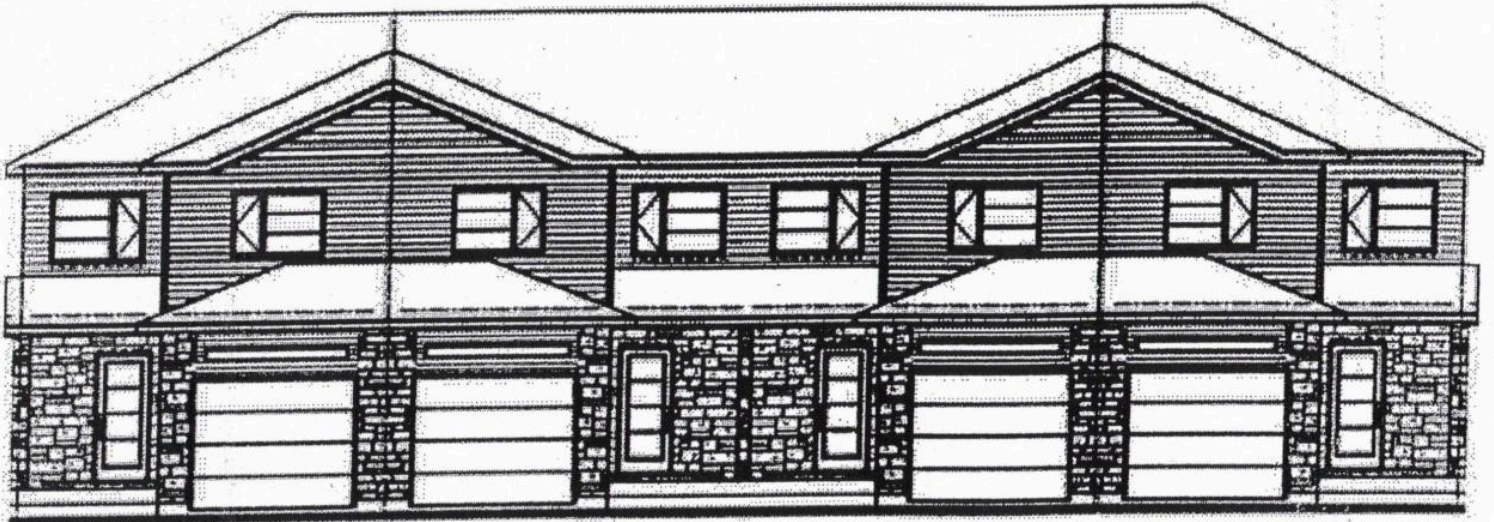


MODERN TOWN HOMES (LIMOGES)

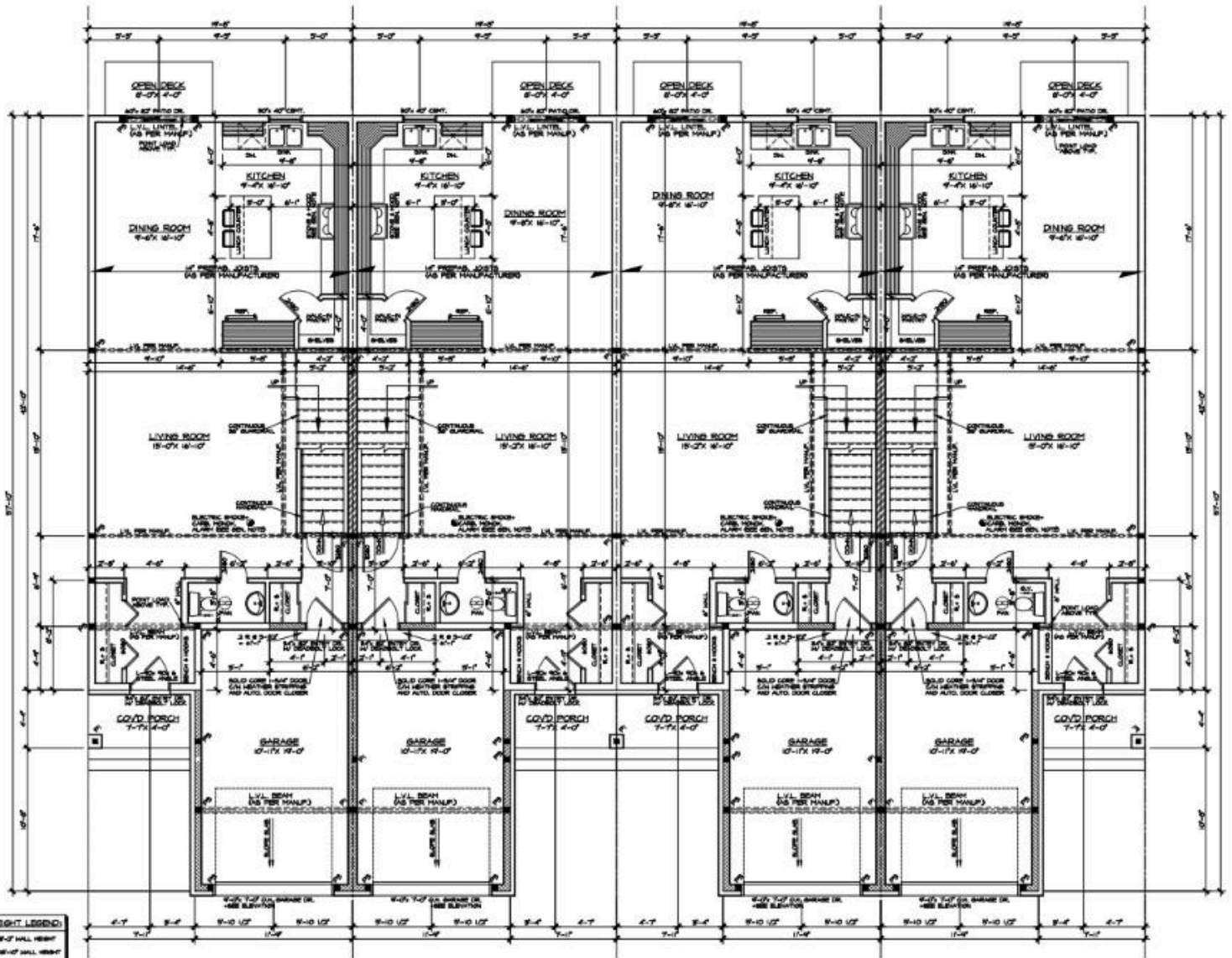
1640 Sq. ft.

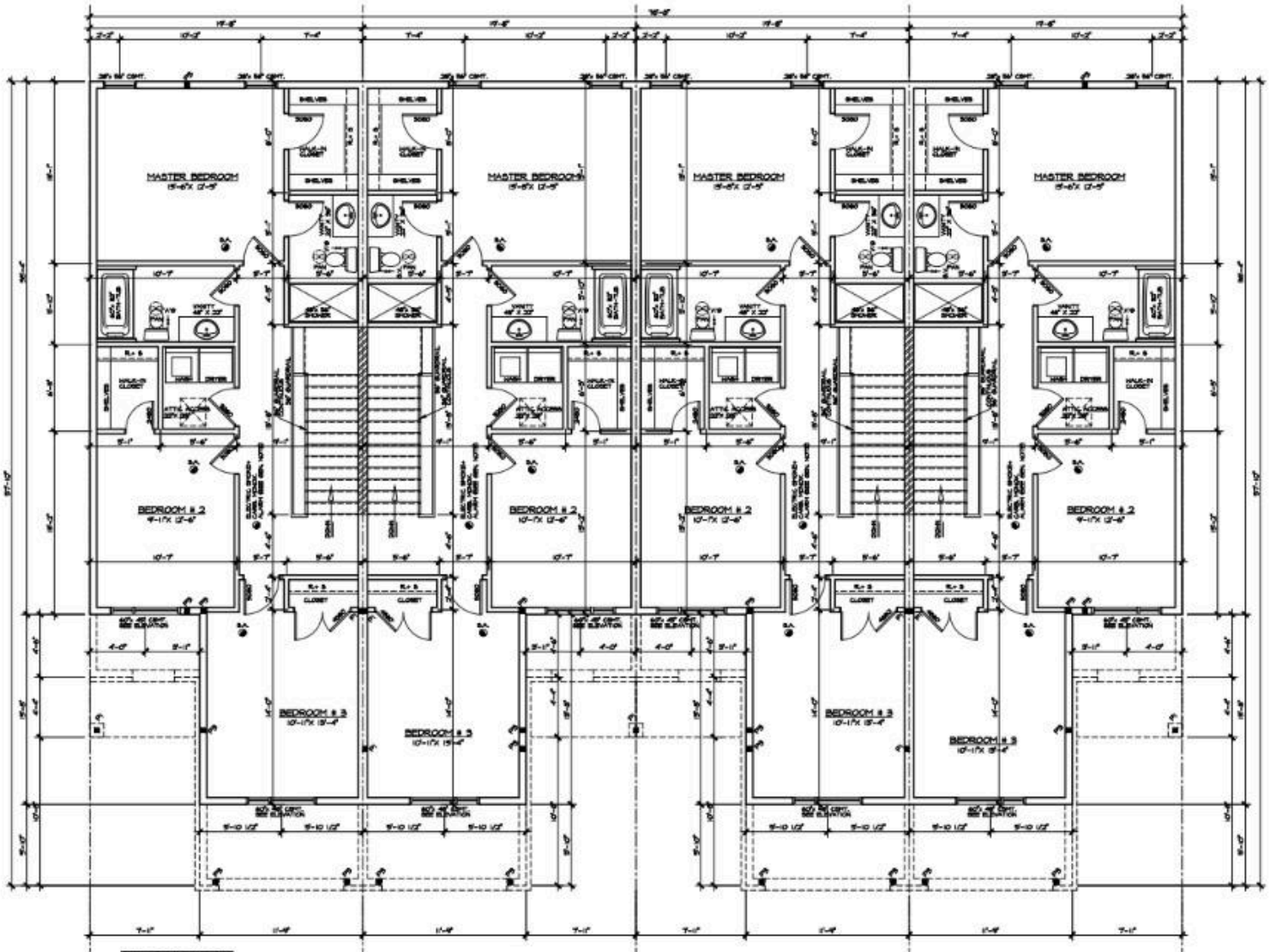


- Colour exterior front door, front windows & garage door
- Transom windows above garage
- Ceramic in kitchen, bathrooms and front entrance
- Hardwood/ceramic in dining room
- Hardwood in living room
- Square sink in main bathroom
- Square baseboards (no crown moulding)
- Conmore style interior doors with modern handles
- Swing closet doors (some exceptions apply)
- Rough-in for dishwasher
- Water connection for fridge
- 5 pot lights (choice of where inside) & Exterior pot lights
- 2 paint colours throughout home
- Modern front windows and door
- Walk in closet in Master with high/low rods & shelves

Plans, specifications, & measurements are subject to change without notice. Updated June 2020. E.&O.E.

LECLAIR





HALL HEIGHT LEGEND:

[Pattern: Dotted]	8'-0" HALL HEIGHT
[Pattern: Horizontal Lines]	9'-0" HALL HEIGHT
[Pattern: Vertical Lines]	10'-0" HALL HEIGHT
[Pattern: Diagonal Lines]	11'-0" HALL HEIGHT

Paul ADVANCED DESIGN - BCN 9988
 MARTIN ZIEMANN - BCN 22718

